



ECM MADE EASY™ CHECKLIST



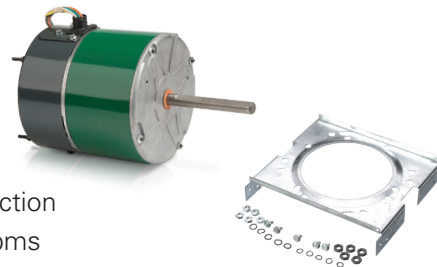
PSC TO ECM UPGRADE – INDOOR BLOWER MOTORS – Evergreen® · IM

- √ 2 models cover most residential applications
 - › 6005 1/5 - 1/2 HP
 - › 6010 1/2 - 1 HP
- √ Auto sensing rotation
- √ 115/208-230 VAC
- √ Easy 3-step wiring harness
 - › Black and white leads – High voltage line power connection
 - › Red and black leads – Pick your HP – Fan control connection
 - › Multi-colored leads (5) – 4 speed options – Thermostat connections
- √ NO CAPACITOR REQUIRED



PSC TO ECM UPGRADE – OUTDOOR FAN MOTORS – Evergreen® · OM

- √ Must be a shaft down application
- √ 2 models cover most residential applications
 - › 6301 – 208-230 VAC (1/5 - 1/10 HP)
 - › 6303 – 208-230 VAC (1/3 - 1/10 HP)
- √ 4 leads – connects directly to existing controls
 - › Black and white leads – High voltage line power connection
 - › Orange lead connects to piggy back on black for 850 rpms
 - › Yellow lead connects to piggy back on black for 1075 rpms
- √ NO CAPACITOR REQUIRED



Stock # 2098A
Mounting bracket used in place of mounting cables in Rheem®* condensers

ECM TO ECM – X13®/ENDURA® PRO OR ANY CONSTANT TORQUE ECM – Evergreen® · EM

- √ Make sure it is X13 or Endura Pro or any constant torque ECM equivalent with 24 VAC speed taps
- √ HP and Voltage are the only information needed to find replacement
- √ Auto sensing rotation
- √ 5 preprogrammed speed taps, 1 – Low, 2 – Low Med, 3 – Medium, 4 – Hi Med, 5 – High
- √ Compatible with OEM plugs or wire connections
- √ Adjust speed selections as needed for proper airflow

230 VOLT	115 VOLT
1/3 HP – 6203E	1/3 HP – 6103E
1/2 HP – 6205E	1/2 HP – 6105E
3/4 HP – 6207E	3/4 HP – 6107E
1 HP – 6210E	1 HP – 6110E



www.ECMMadeEasy.com

*Rheem is believed to be the trademark or trade name of Rheem Manufacturing Company and is not owned or controlled by Regal Beloit Corporation.
Regal, Genteq, ECM Made Easy, Endura, Evergreen and X13 are trademarks of Regal Beloit Corporation or one of its affiliated companies.
©2018 Regal Beloit Corporation, All Rights Reserved. MCO18078E

